

# THE BOX



**CONSTRUCTION**



## EMPLOYMENT – 72% in PL postcodes

- 72% of subcontract packages in PL postcodes
- 61% of work force hours are within 10 mile radius
- 46% walk bus or cycle to work
- 6 allocated work experience on the site, 4 not from Education
- Over 600 wage apprentice training weeks achieved on site to date





£28m. SECURED FROM SOURCES OUTSIDE OF CITY

THE BOX



Supported using public funding by  
**ARTS COUNCIL ENGLAND**



The Wolfson\*  
Foundation



**ARTS & HUMANITIES WITH PLYMOUTH UNIVERSITY**



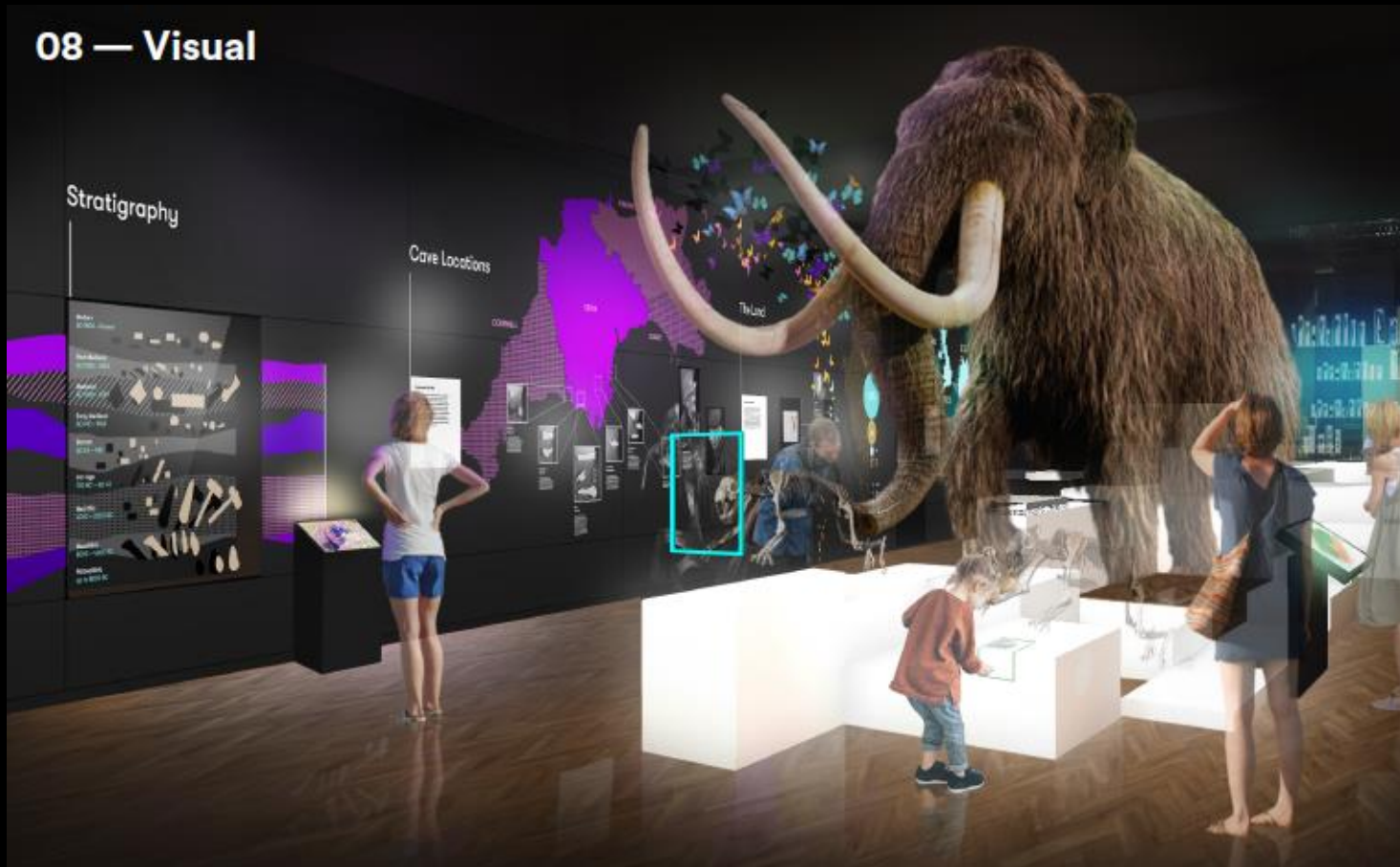


**THE  
BOX**

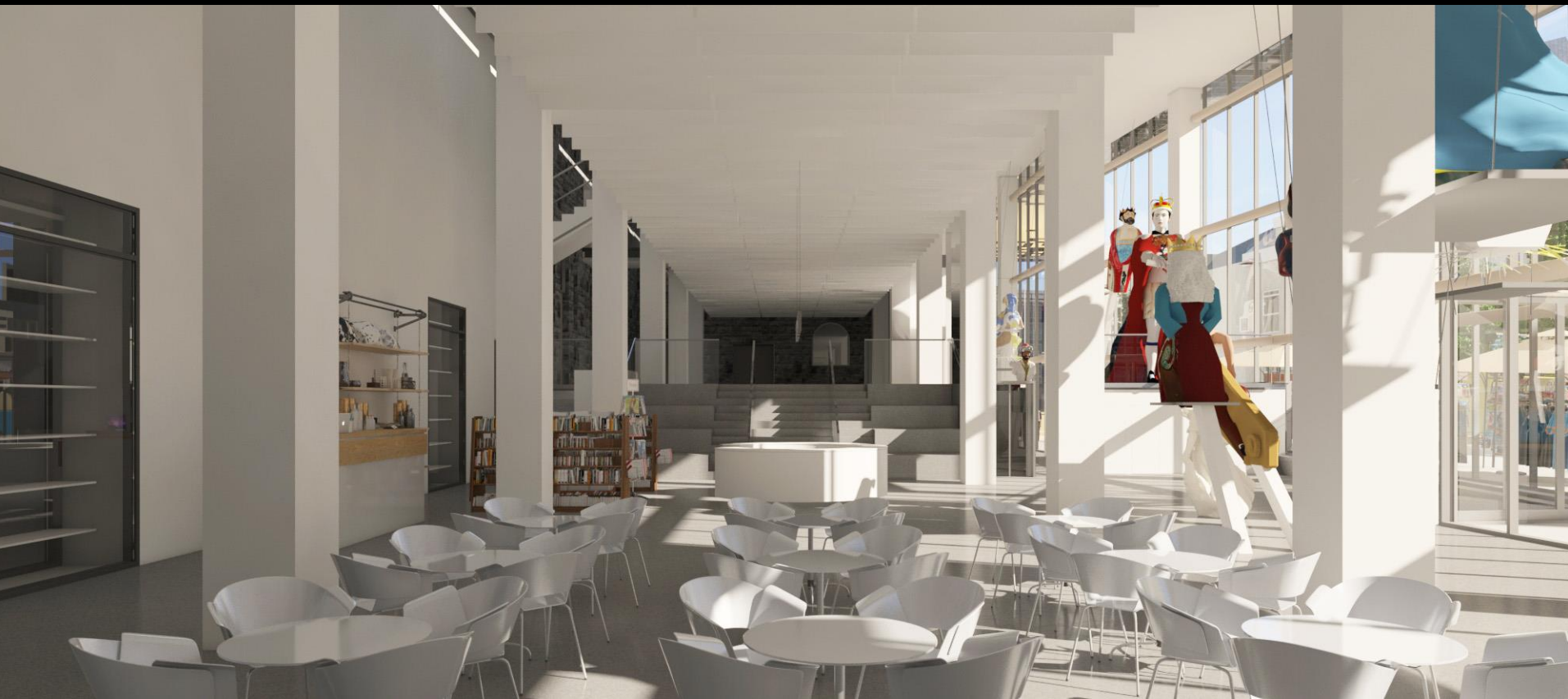
**CONSERVATION  
PROGRAMME**

# EXHIBITION FIT-OUT AND RELOAD

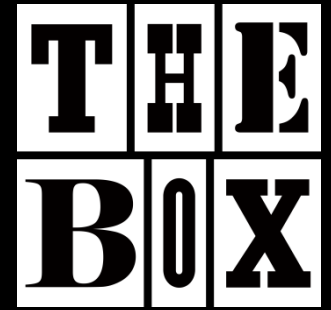
## 08 — Visual



**PLAN FOR OPENING**







# CONTEMPORARY ART PROGRAMME

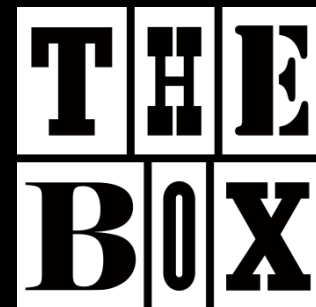




**SCHOOLS ENGAGEMENT PROGRAMME**



# COMMUNITY ENGAGEMENT PROGRAMME



Carers Club  
Arts and Minds

A session with the  
Dementia Carers group  
concentrating on the  
beneficial effects of  
reminiscence and  
weekly art sessions.



## 281 DAYS TO GO

